



## METALLO DURO

**RCR 17**

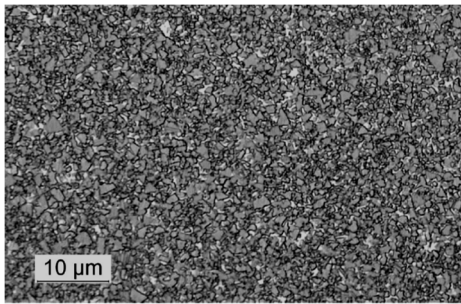
EdmW

SPECIAL  
CORROSION FREE

WC	Co	TiC	TaC	Ni	Other
90,5%	8,5%				1%

Dok. Nr. : 270-14-04

### Grade structure



### Physical information

Average grain size	μm	Medium
Density	g/cm <sup>3</sup>	14.5
Hardness	HV30	1600
Fracture strength	N/mm <sup>2</sup> m <sup>(1/2)</sup>	10
Transverse rupture strength	N/mm <sup>2</sup>	2900
Compressive strength	N/mm <sup>2</sup>	5400
Young's modulus	kN/mm <sup>2</sup>	580
Thermal conductivity	W/Mk	90
Thermal expansion	10 <sup>-6</sup> K	5.4

Tutti i dati riportati in queste schede sono puramente indicativi



**Swiss made for you!**

HARTMETALL ESTECH AG



## METALLO DURO

**RCR 24**

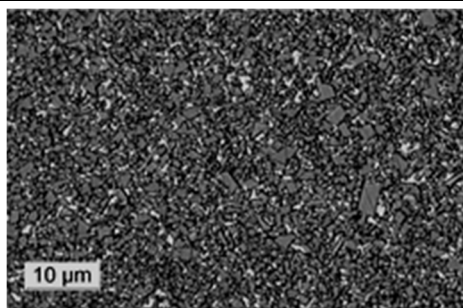
EdmW

SPECIAL  
CORROSION FREE

WC	Co	TiC	TaC	Ni	Other
87%	12%				1%

Dok. Nr. : 224-14-04

### Grade structure



### Physical information

Average grain size	µm	Medium
Density	g/cm <sup>3</sup>	14.15
Hardness	HV30	1400
Fracture strength	N/mm <sup>2</sup> m <sup>(1/2)</sup>	13
Transverse rupture strength	N/mm <sup>2</sup>	3200
Compressive strength	N/mm <sup>2</sup>	5000
Young's modulus	kN/mm <sup>2</sup>	560
Thermal conductivity	W/Mk	85
Thermal expansion	10 <sup>-6</sup> K	5.7

Tutti i dati riportati in queste schede sono puramente indicativi



**Swiss made for you!**  
HARTMETALL ESTECH AG



METALLO DURO



## METALLO DURO

**RCR 30**

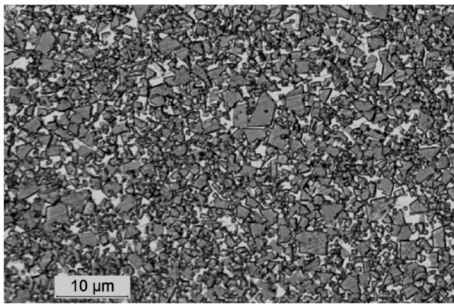
EdmW

SPECIAL  
CORROSION FREE

WC	Co	TiC	TaC	Ni	Other
84%	15%				1%

Dok. Nr. : 231-14-04

### Grade structure



### Physical information

Average grain size	µm	Medium
Density	g/cm <sup>3</sup>	13.85
Hardness	HV30	1200
Fracture strength	N/mm <sup>2</sup> m <sup>(1/2)</sup>	17.5
Transverse rupture strength	N/mm <sup>2</sup>	3400
Compressive strength	N/mm <sup>2</sup>	4500
Young's modulus	kN/mm <sup>2</sup>	540
Thermal conductivity	W/Mk	85
Thermal expansion	10 <sup>-6</sup> K	6

Tutti i dati riportati in queste schede sono puramente indicativi



**Swiss made for you!**

HARTMETALL ESTECH AG